

Scanned Document Notice

This report is a scanned image of the original report. We have included the table of contents only for reference.



You may obtain this report by contacting us directly, however there may be charges associated with the scanning of the original document. Contact us for more details. This report and other related documents can be found at www.mississauga.ca/data

Phone: (905) 615-3200 ext. 5556

Email: eplanbuild.info@mississauga.ca

RSS: <http://feeds.feedburner.com/MississaugaData>

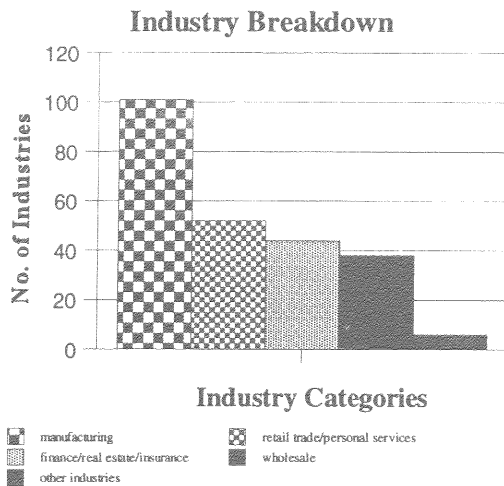
Twitter: www.twitter.com/mississaugadata

Website: www.mississauga.ca/data



Employment District Profile

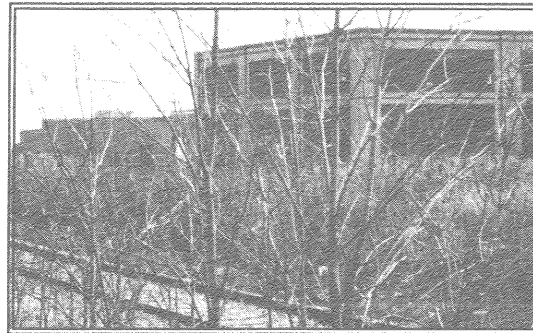
The Erindale Employment District is approximately 179 ha (443 ac.) in area of which 160 ha (396 ac.) are developed and 19 ha (47 ac.) remain undeveloped. The district is home to 241 industries with the largest sector being the manufacturing industries (42%). The remaining businesses are categorized as follows: retail trade and service industries (22%), finance, real estate, insurance and business services (18%), wholesale trade industries (16%), and other industries consisting of health services, communications and agricultural related service industries (2%).



Community Profile Conclusion

The district has evolved into a mix of industrial operations and more recently office development. In addition, the Burnhamthorpe Road West frontage has developed into a successful retail corridor within the City. A significant feature of this district is to provide for industrial operations that may have extensive outdoor processing and storage areas, a rare commodity in the City.

Employment number and industry breakdowns are derived from the Mississauga Business Directory, City of Mississauga Economic Development Office; c. 1995



City of Mississauga

Planning and Building Department
Policy Planning Division



Erindale Employment District

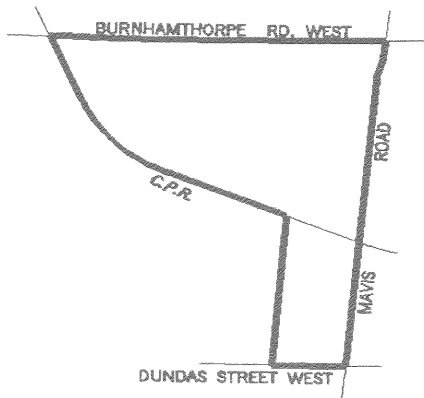


**Community
Profile**

January 1997

Location

The Erindale Employment District is located in the central portion of Mississauga. Its boundaries and major streets are shown on the map below.



History

The area was once known as Springfield. The name was changed in 1890 to "Erindale" commemorating the late Rev. James Magrath's estate. The estate was named in honour of his native country as "erin" is gaelic for Ireland.

Erindale prospered as a main stopping place for stagecoaches between Toronto and

Hamilton that brought trade and commerce to the village. However, the opening of the Great Western Railway in 1855 caused a serious financial recession for the community. In 1878, the Credit Valley Railway Company built a station in the area but it failed to restore the former prosperity of the community. By 1910 the power of the Credit River had been harnessed for hydroelectricity with the construction of a dam a short distance up stream from the Dundas Street Bridge.

Industrial lands were originally designated south of the CNR tracks and two concessions west of Mavis Road from Burnhamthorpe Road West to Dundas Street West. The current configuration of the employment district was created by amendments to the former Toronto Township official plan for residential development beginning in 1963, with the completion of the Erindale Woodlands Community in 1970. These land use designations were confirmed by the Mississauga Official Plan in 1981.

Labour Force Information

The business employment breakdown indicates that the majority of businesses have 1-9 employees representative of a very diverse business community. There are no industries with greater than 500 employees. The

employment ratio for the employment district is 18.5 employees/hectare of land.

District Employment Number Breakdown

Number of Employees	Number of Businesses	Percent of Businesses
1-9	148	61.4%
10-49	67	27.8%
50-99	10	4.2%
100+	15	6.2%
Unknown	1	0.4%

Transportation Facilities

The area is serviced by both Mississauga Transit and GO Transit (Erindale Station). Inter-regional transportation is facilitated by the close proximity of the Highway 403 and Mavis Road interchange. Future grade separations are planned for the intersections of the rail line with Erindale Station Road, Wolfdale Road and Mavis Road.